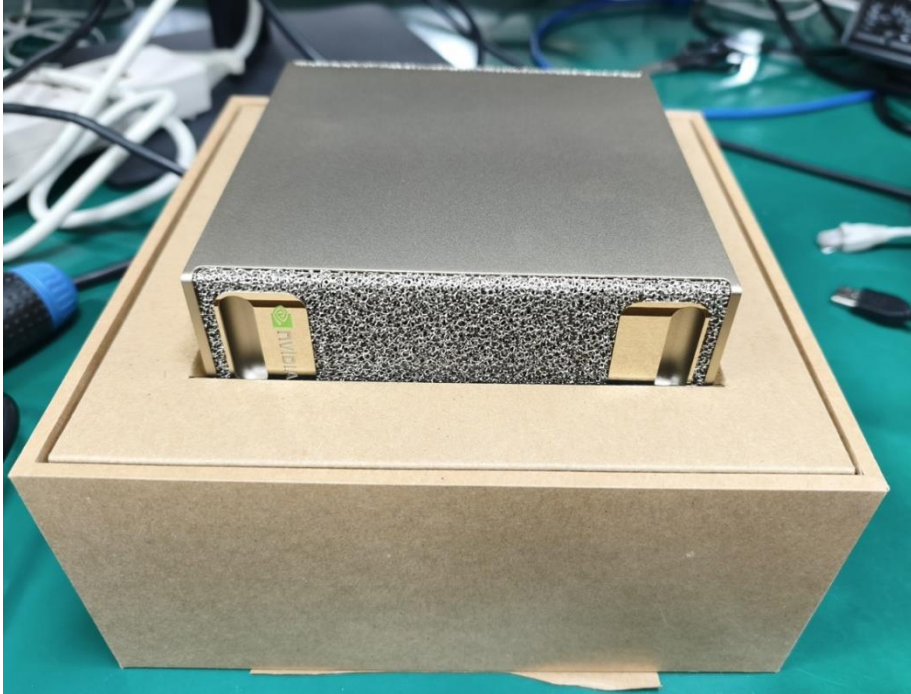


# **NVIDIA DGX Spark**

## **系統設定手冊**

## 1. DGX Spark Founder Edition 開箱與內容物說明

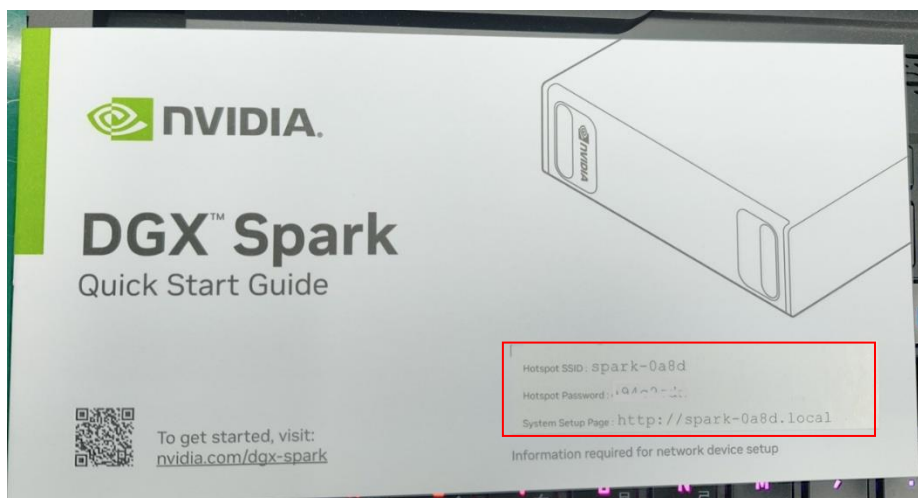
### 1.1 第一層可以看到 DGX Spark 本體



### 1.2 第二層則是說明書與電源轉接器



1.3 說明書 (Quick Start Guide)上有該 DGX Spark 的 SSID 及登入密碼 (請妥善保管此說明書)



1.4 將機器底部塑料板移除, 這步驟因底板以磁力方式固定, 不需任何工具操作. DGX Spark 機器序號則可在機器背面取得.



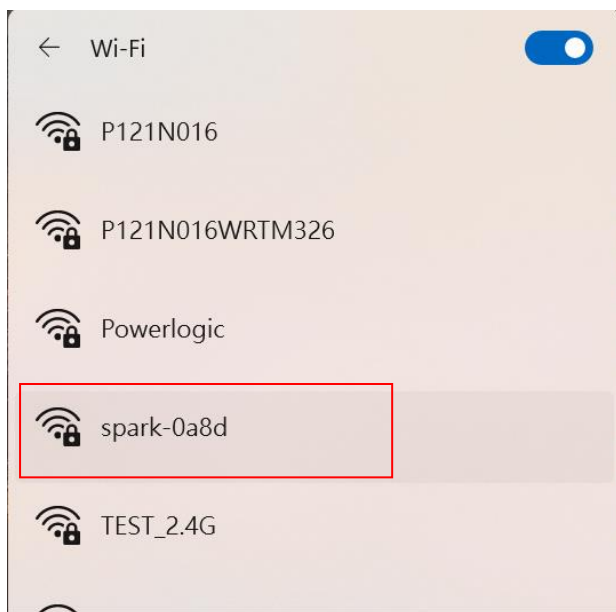
1.5 序號位置



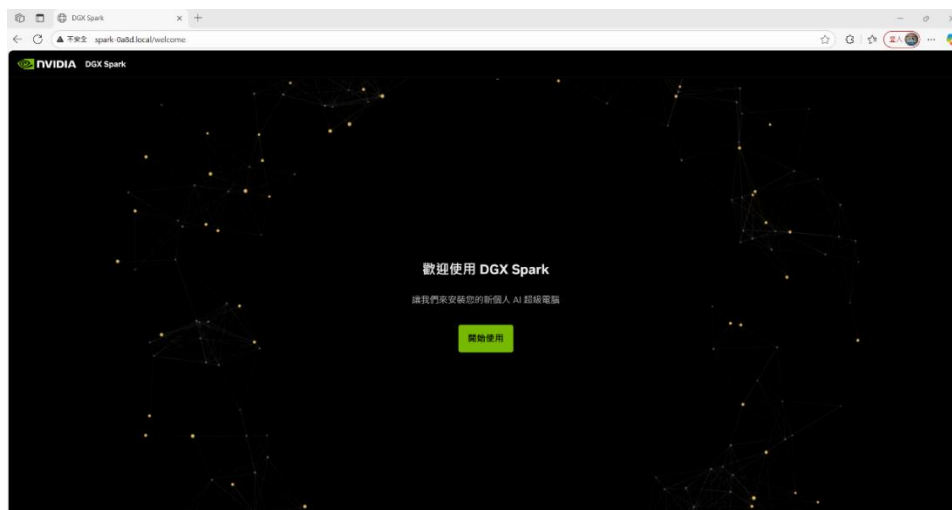
## 2. DGX Spark Edition Founder 第一次開機設定

以下是以無線連接 DGX Spark 來做設定:

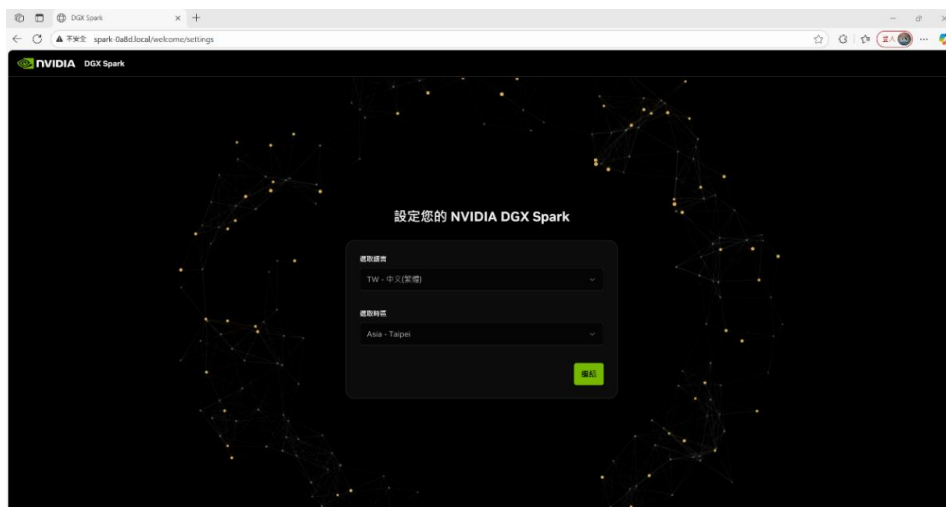
### 2.1 DGX Spark 開機後 WiFi 列表裡面可看到該 SPARK SSID (spark-xxxx), 密碼則在說明書首頁



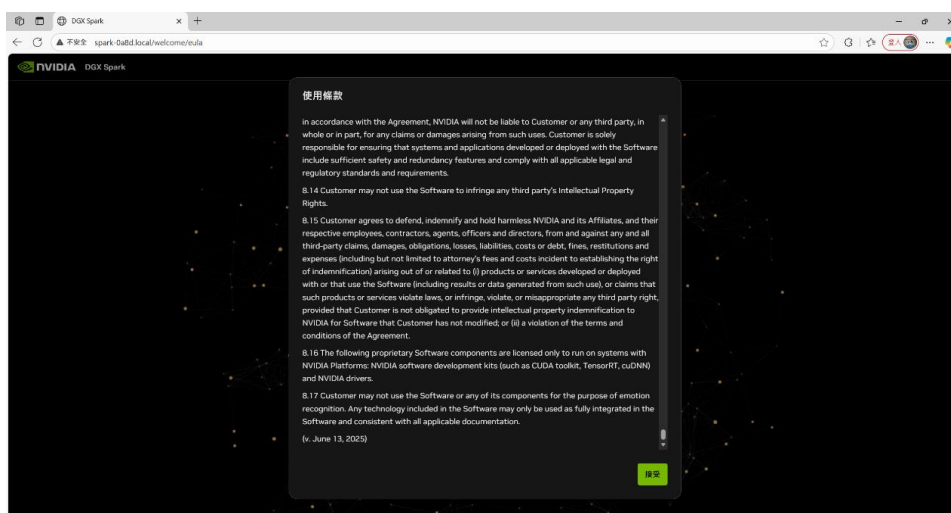
### 2.2 連線該 DGX Spark 後, 開啟 Browser 輸入 spark-xxxx.local 就會出現下面設定畫面, 此畫面跟 SPARK 本機連線螢幕畫面一樣



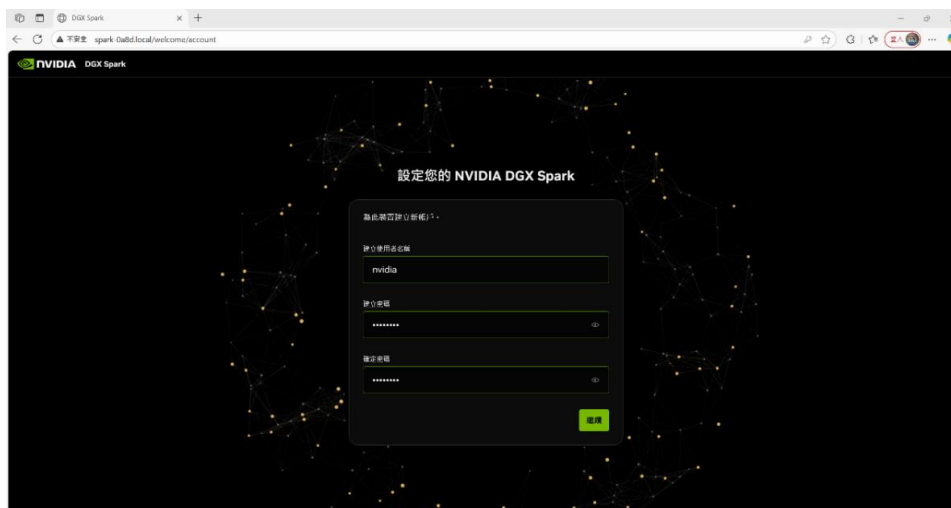
## 2.3 從此開始設定 DGX Spark, 選擇系統語言



## 2.4 軟體宣告頁

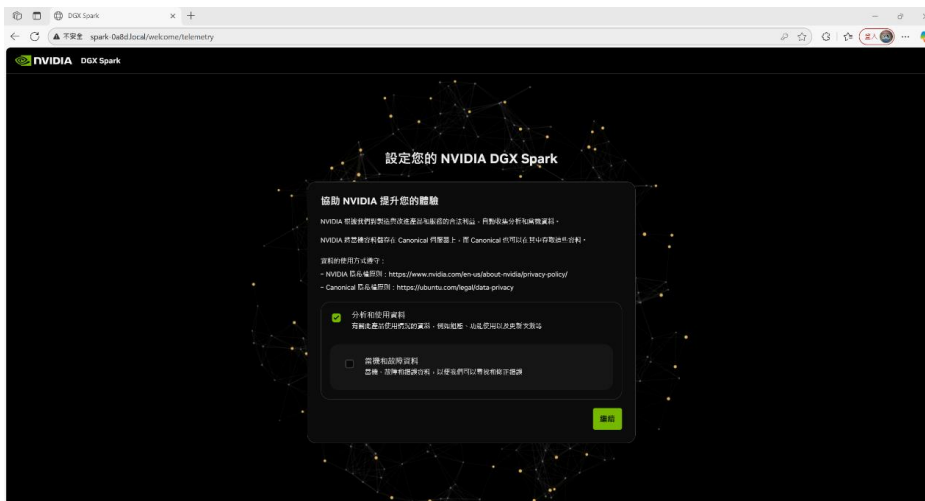


## 2.5 設定登入帳號與密碼

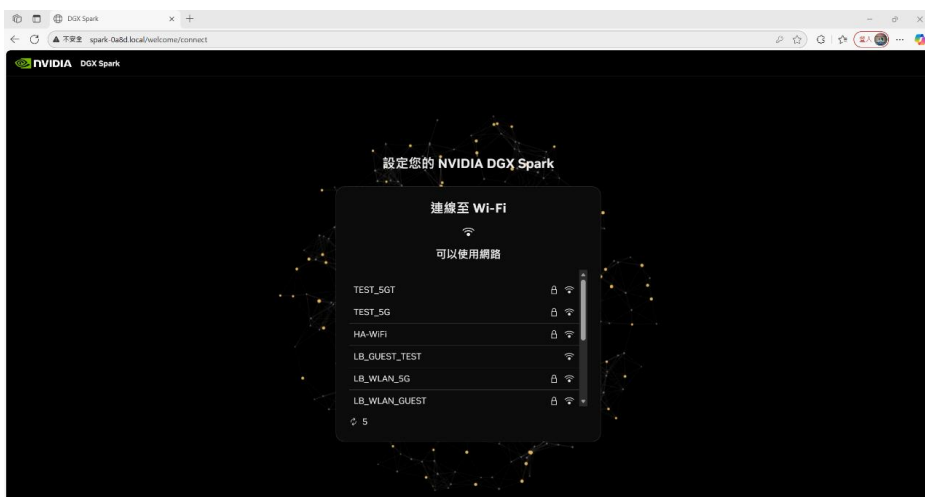




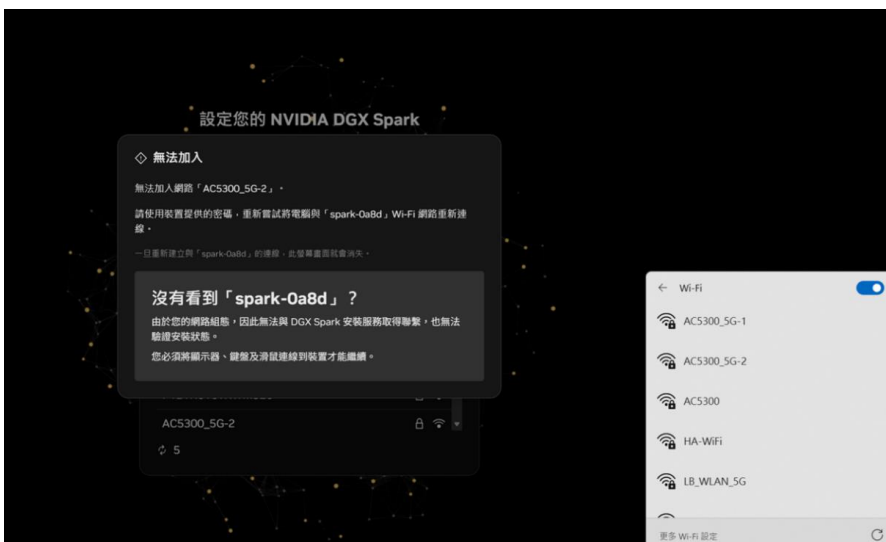
## 2.6 詢問是否可提供資料分析



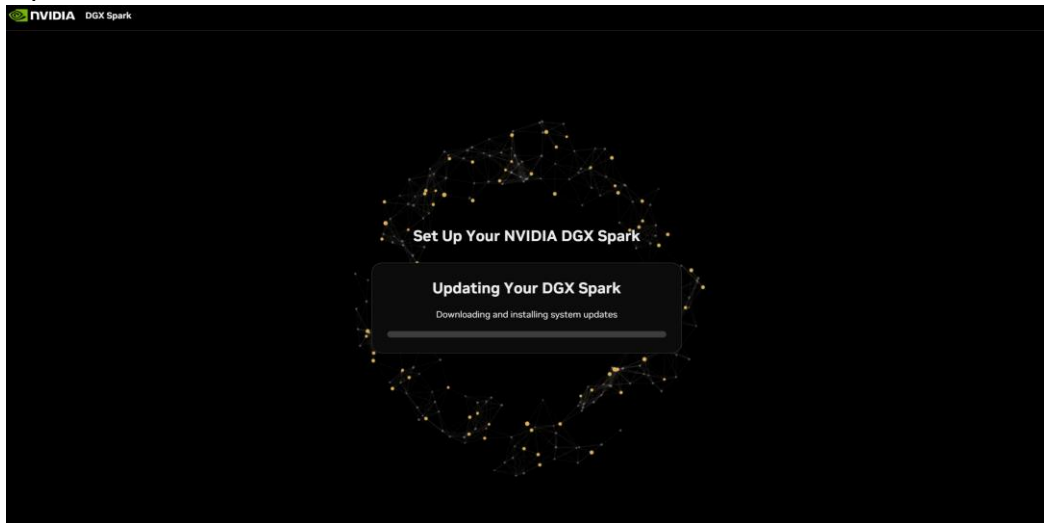
## 2.7 連線無線網路



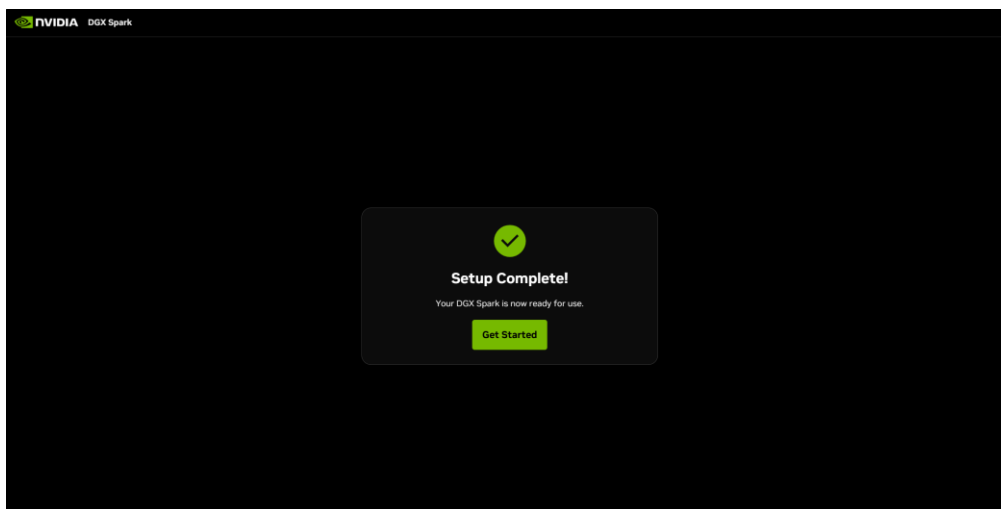
2.8 將 DGX Spark 連線到其他無線網路後，會跳出無法連線到該網路。另外該 DGX Spark 的 SSID 也會消失，會呈現完全連不到 Spark 的現象。



2.9 此時請連線到與 DGX Spark 相同的無線網路, 並開啟 Browser 再一次連線 spark-xxxx.local, 就可以看到它已在進行系統更新.



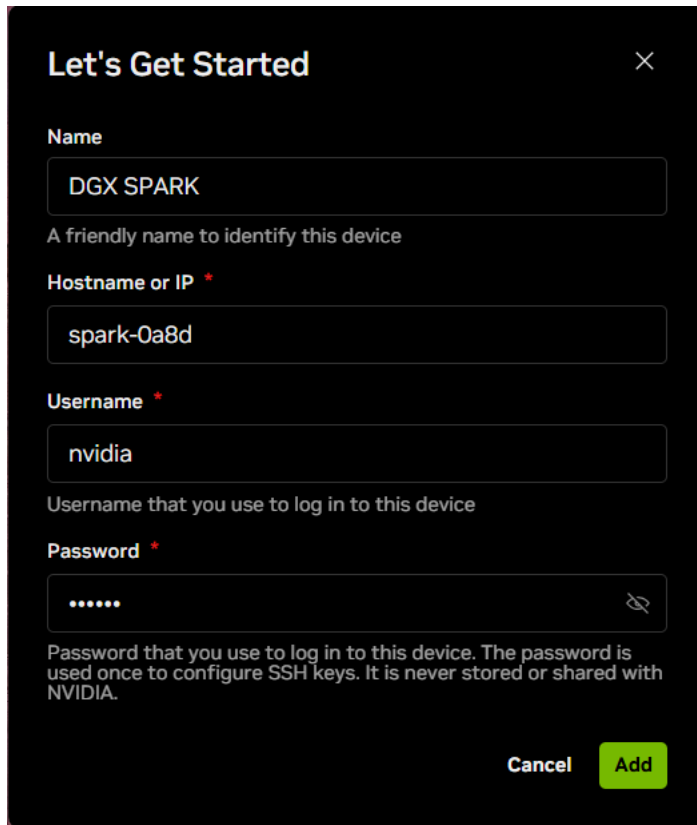
2.10 更新完成後, 若要連線到該 DGX Spark, 則需要使用 NVIDIA Sync 做連線.



### 3. 安裝 NVIDIA Sync

3.1 請至 [Set Up Local Network Access | DGX Spark](#) 下載並安裝

3.2 執行 NVIDIA Sync, 會出現一新增連線視窗, 請輸入 DGX Spark Hostname 與登入帳密

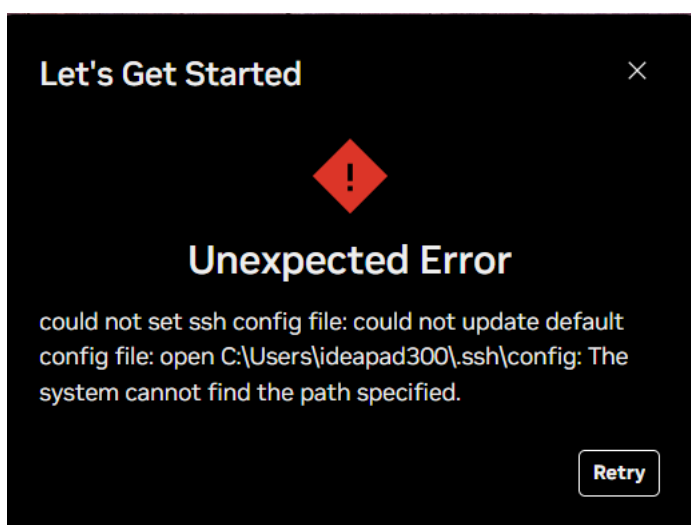


The image shows a dark-themed dialog box titled "Let's Get Started" with a close button (X) in the top right corner. It contains four input fields with labels and a "Add" button at the bottom right.

- Name:** A text box containing "DGX SPARK". Below it is the text "A friendly name to identify this device".
- Hostname or IP \*:** A text box containing "spark-0a8d".
- Username \*:** A text box containing "nvidia". Below it is the text "Username that you use to log in to this device".
- Password \*:** A password field with masked characters "....." and an eye icon to toggle visibility. Below it is the text "Password that you use to log in to this device. The password is used once to configure SSH keys. It is never stored or shared with NVIDIA."

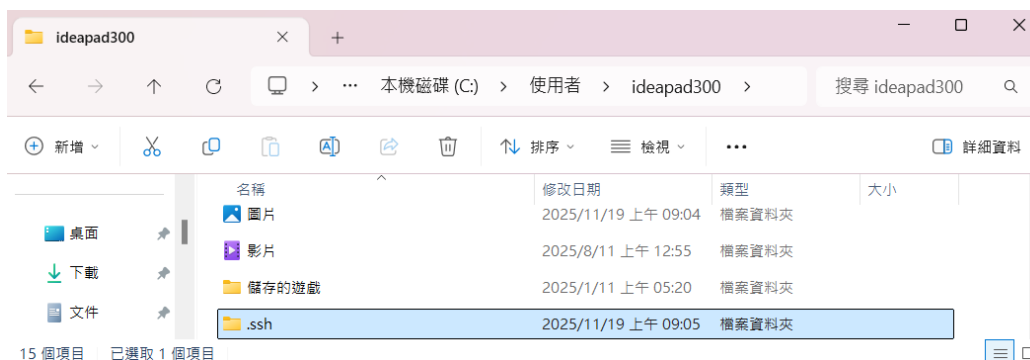
At the bottom right, there are two buttons: "Cancel" and "Add".

3.3 若是第一次連線, 則會跳出下面錯誤訊息, 表示找不到該 config 檔

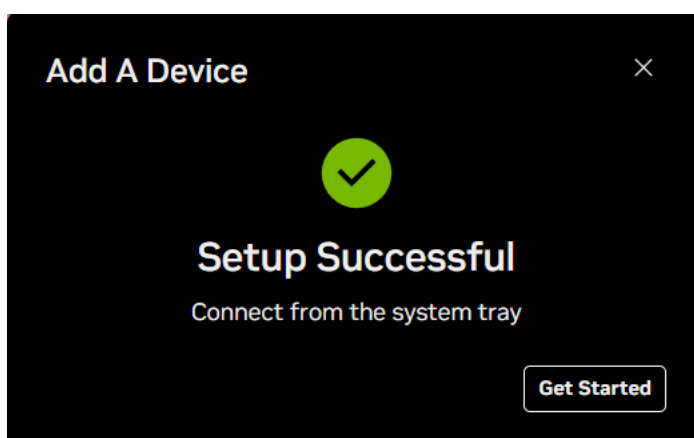




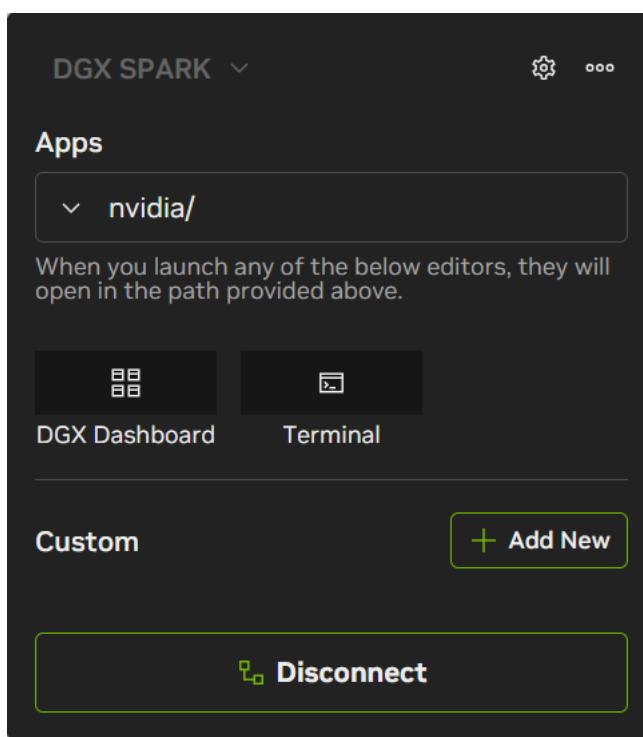
3.4 此時請在 user 資料夾裡新增一個.ssh 資料夾，並重新連線



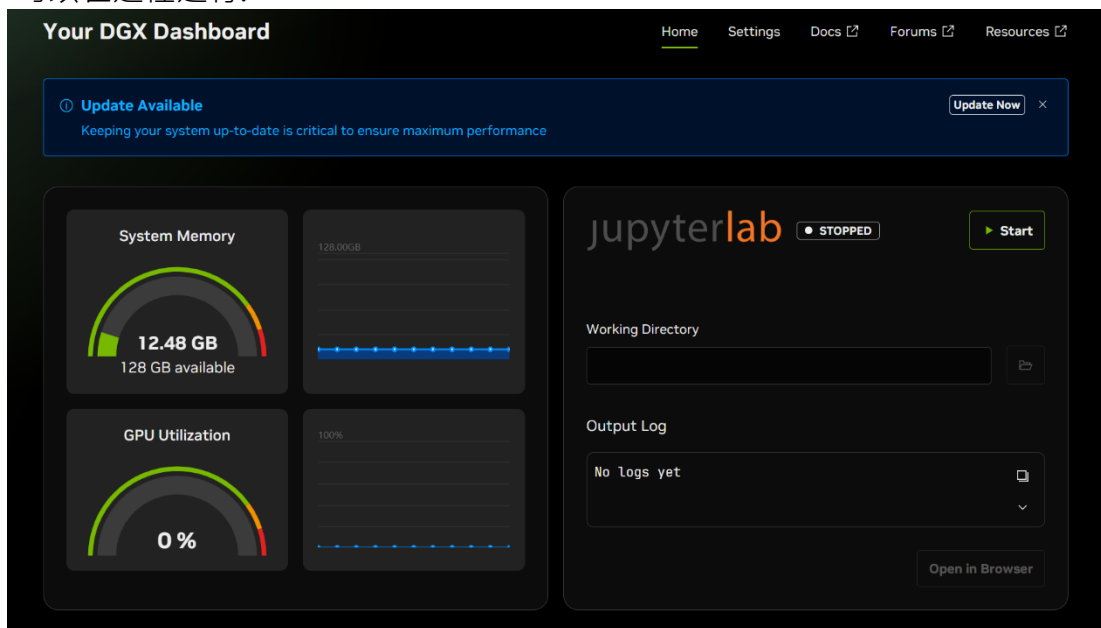
3.5 再次連線就可以連線成功



3.6 這時在桌面右下就會看到 NVIDIA Sync 正在執行安裝



3.7 點選 Dashboard 就可以看到該 DGX Spark 的記憶體與 GPU 使用率, 若要做系統升級也可以在這裡進行。



3.8 點選 Terminal, 則會 SSH 連線到該 DGX Spark

```
nvidia@spark-0a8d: ~  
To run a command as administrator (user "root"), use "sudo <command>".  
See "man sudo_root" for details.  
  
nvidia@spark-0a8d:~$ nvidia-smi  
Wed Nov 19 09:13:02 2025  
+-----+  
| NVIDIA-SMI 580.95.05                Driver Version: 580.95.05      CUDA Version: 13.0     |  
+-----+  
| GPU  Name      Persistence-M   Bus-Id        Disp.A    Volatile Uncorr. ECC  |  
| Fan  Temp        Perf         Pwr:Usage/Cap     Memory-Usage  GPU-Util  Compute M.  |  
|-----|  
| 0    NVIDIA GB10      On          0000000F:01:00:0 Off          0%          Default  |  
| N/A   40C         P8              4W /   N/A      Not Supported           N/A          |  
+-----+  
+-----+  
| Processes:                               GPU Memory Usage |  
| GPU   GI    CI          PID    Type   Process name                      Usage  |  
|-----|  
| 0     N/A    N/A         2415    G     /usr/lib/xorg/Xorg                43MiB |  
| 0     N/A    N/A         2781    G     /usr/bin/gnome-shell              16MiB |  
+-----+  
  
nvidia@spark-0a8d:~$
```



```

Copying files
Overall Progress
[
]
3 of 253 files
Copying fastos.prtaa
Progress
[oooooooooooooooooooooooooooooooooooooooooooooooooooooooooooooooooooooooooooo]
Speed: 30.69MB/s - Time remaining: 00:13

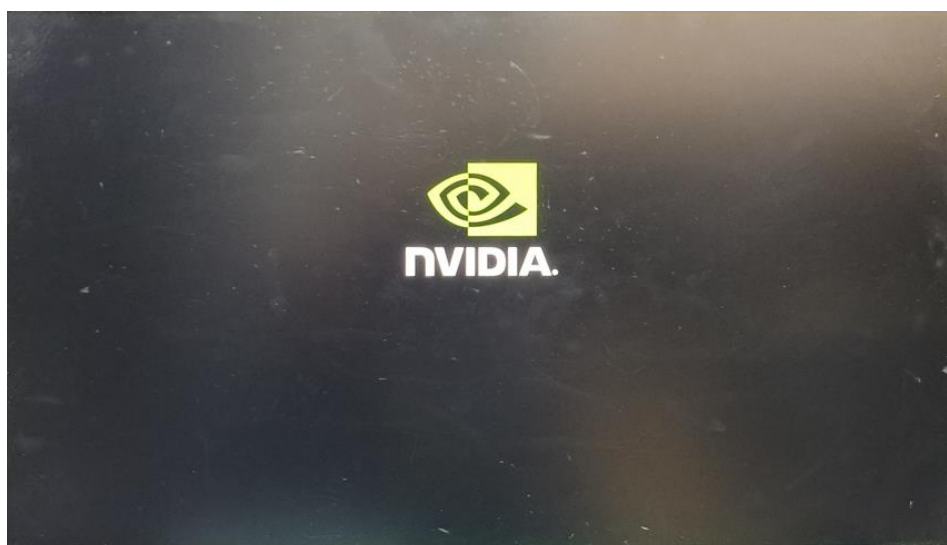
Select USB Drive
- Press Enter to pick the drive highlighted in green
- Use Up and Down arrows to navigate the list
+ ADATA USB Flash Drive (D:) - 231.25GB
Selected drive: ADATA USB Flash Drive
Are you sure you want to format this drive? (Y/N): y
Copying files from C:\Users\AROUS15\Downloads\dgx-spark-recovery-image-1.91.51-1\usbimg.customer\usb to D:...
    
```

#### 4.7 複製完成後，將隨身碟插入 DGX Spark

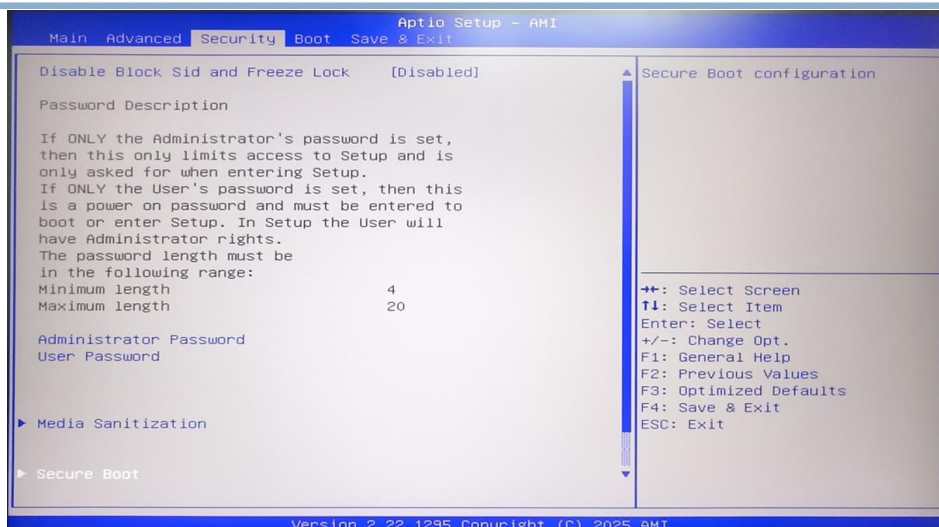
```

Copying files from C:\Users\AROUS15\Downloads\dgx-spark-recovery-image-1.91.51-1\usbimg.customer\usb to D:...
Ejecting drive...
USB Key Created successfully!
Press any key to continue...
    
```

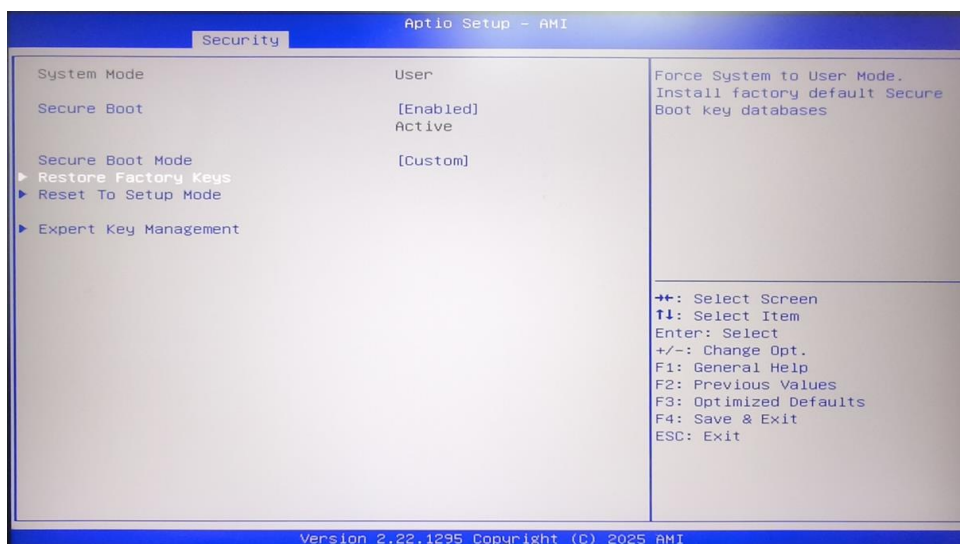
#### 4.8 進入 DGX Spark BIOS，開機後看到有 NVIDIA LOGO 畫面，按 DEL 或 ESC 進入 BIOS.



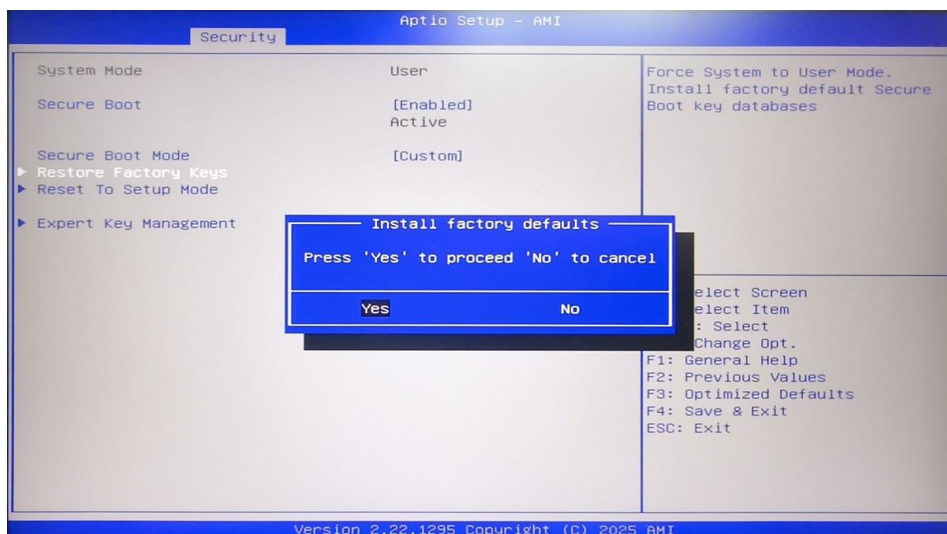
#### 4.9 進入後到 Security 頁面，選取 Secure Boot.



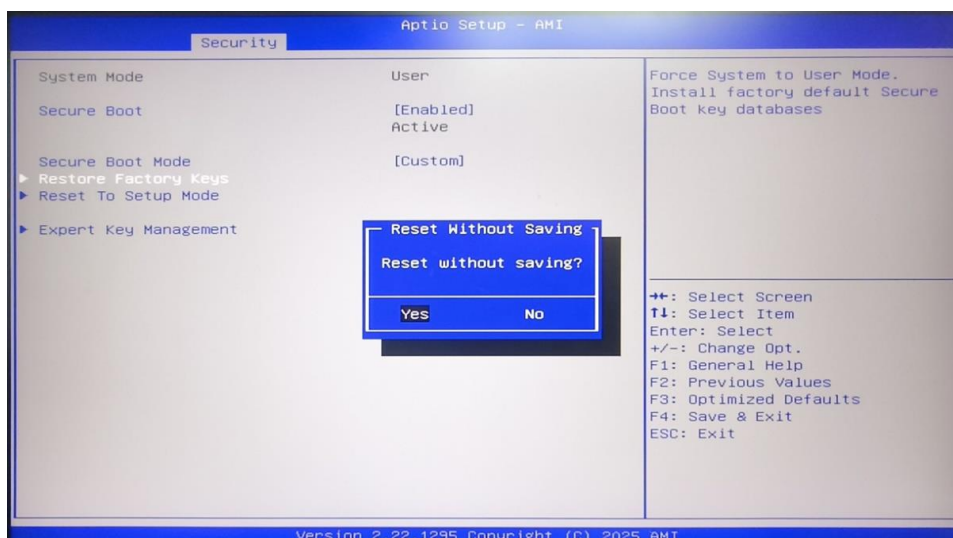
#### 4.10 選取 Restore Factory Keys



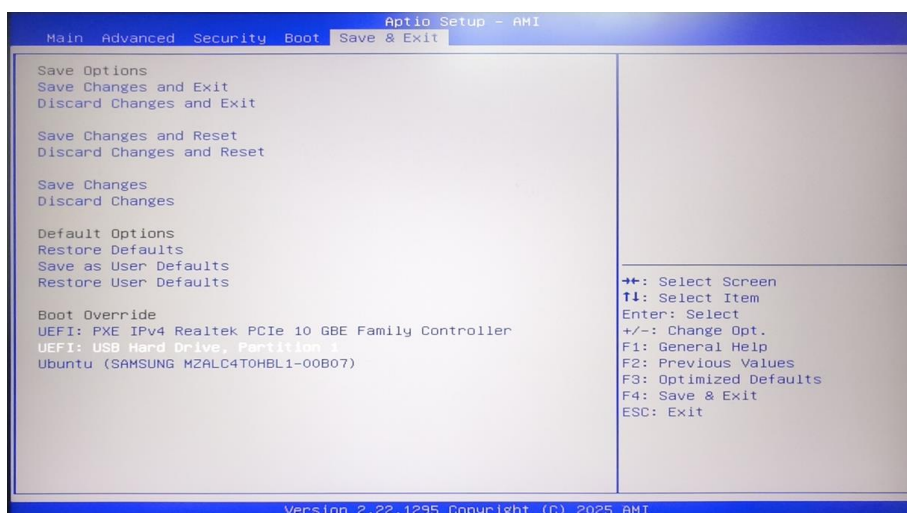
#### 4.11 選取 Yes 來回復到預設值



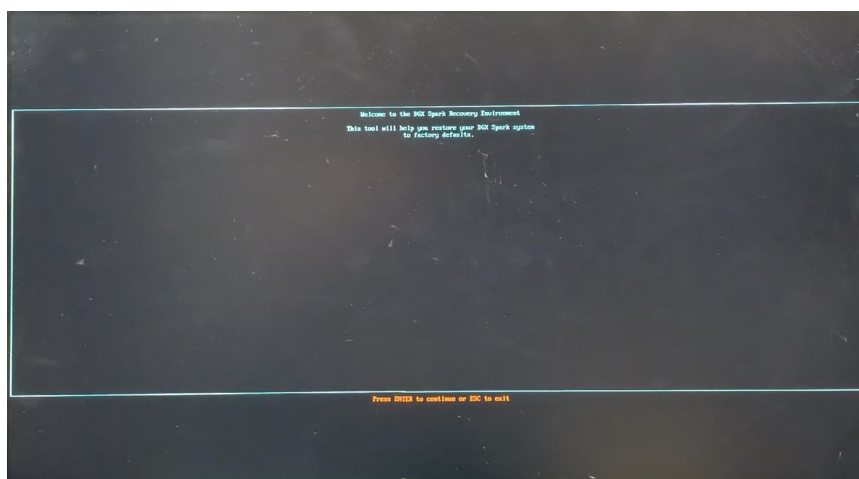
#### 4.12 設定完後會要求重新開機,重新開機後請再回到 BIOS



#### 4.13 再進入 BIOS 後, 至 Save & Exit 頁面, 選取隨身碟開機

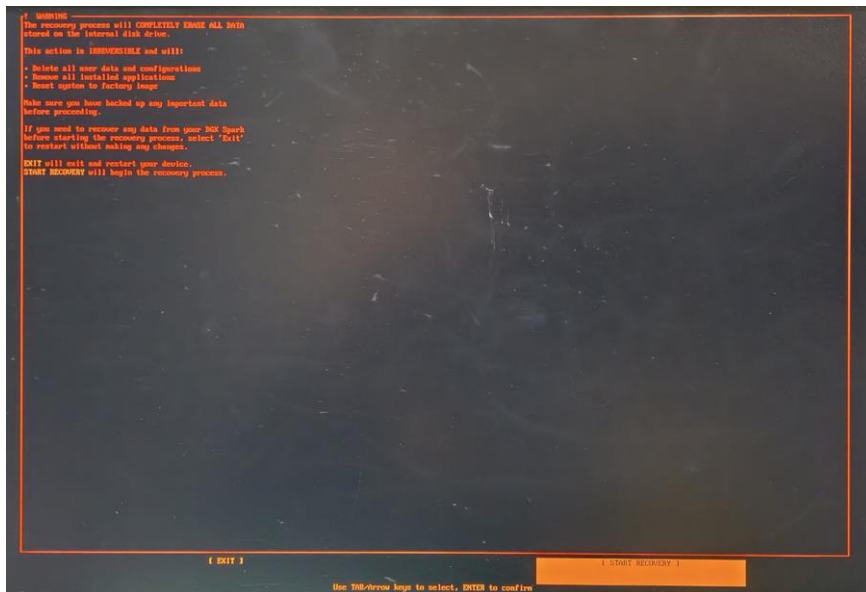


#### 4.14 開始進行 DGX Spark Recovery

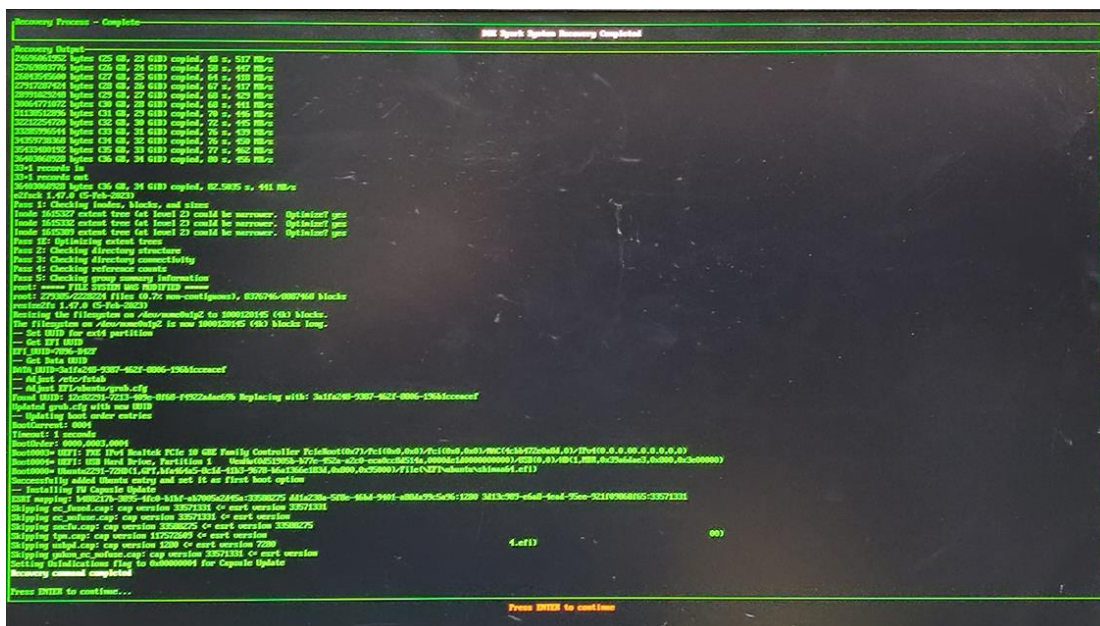




4.15 宣告若開始 Recovery, 將會清除掉所有的資料. 若沒問題, 選取 Start Recovery.



4.16 接下來就開始複製並安裝



#### 4.17 完成後, 請 Restart

